

# November 2004 News Letter

## Memorial Monument Getting Re-pointed

Putnam Memorial Campground, as it was originally called, was commissioned by the state general assembly in 1887. Even before the workmen started making roadways into the old Revolutionary War camp, a memorial to General Israel Putnam and his officers and men was erected on a knoll just inside the park entrance in 1888. This was the first structure raised in the park..... 116 years ago. The memorial was built in the form of an obelisk. Built of native granite, quarried on the spot,, ten feet square at the base and forty-two feet high at the summit. The monument is surmounted by a ball two feet in diameter. The monument can be seen when passing by the entrance on Putnam Park Road.

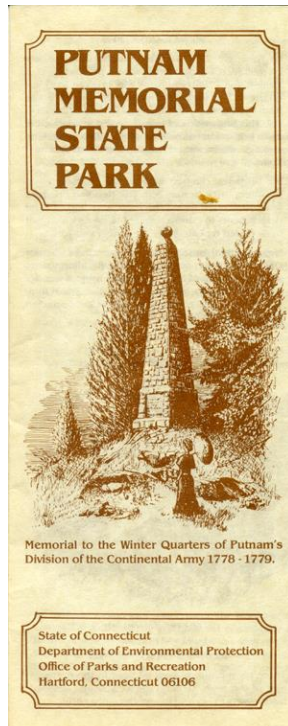
Passage of time takes its toll on things including the monument. The cement grout between the stones of the obelisk has been slowly deteriorating over the years. In fact just a few years ago, a tree was growing out of the side about 35 feet up. The Kronenberger restoration crew has constructed scaffolding up the entire height of the monument and will start cleaning out loose cement, and then re-pointing the entire structure, to make it sound and waterproof once again.



Park entrance with the memorial on the knoll at the top of the incline.



1902 photo of obelisk. Note the lack of trees.



A park brochure.



Scaffolding erected Nov. 2004



## November FAN's Meeting

The November meeting of the Friends group was held on Monday, November 8<sup>th</sup> at the Redding Town Hall.



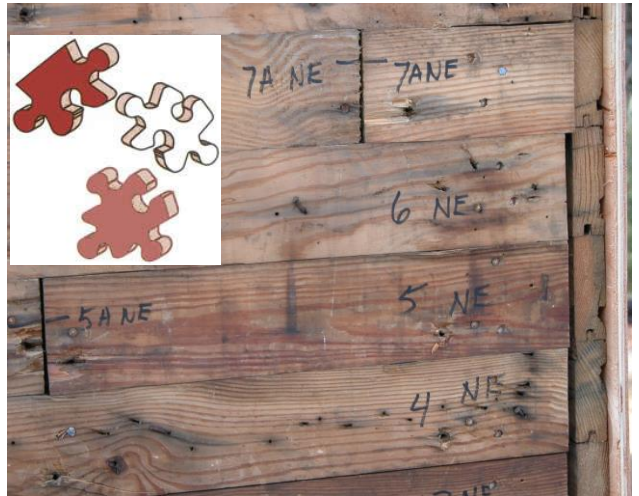
### Discussions held included:

1. Approval of lighting fixtures and installation for the park museum.
2. Update of the many construction projects at the park..
3. Membership and dues letters, mailing lists, and other sources for the annual mailing of letters.
4. Nathan Hale reported that funding has come through for new signs at the park. A committee will be formed to decide which signs should be made.
5. The museum and park gates were closed for the winter on Nov. 15<sup>th</sup>.

## Pavilion Puzzle Pieces Marked

When Kronenberger & Sons dismantled the pavilion earlier this fall they marked all the pieces of the puzzle, knowing that they would soon be putting it back together again.

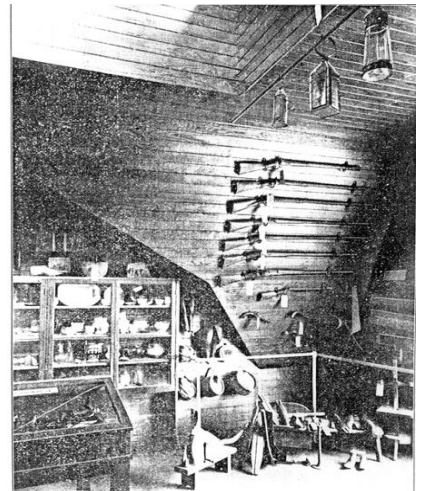
Some of the pieces were damaged over the many years, and had to be replicated. They took meticulous measurements and hand crafted many of the new posts and beams. All wood and siding that was still useable will go back into the reconstruction of the building.



## First Museum

The first park museum dated back to the 1890's, long before the current park museum was built in 1921. The location? ..... in the second floor of the 1893 Pavilion.

Many of the Revolutionary War era artifacts at the camp were unearthed during the process of creating the park. Other items from the era were donated by area residents. The photo at the right was taken in the pavilion museum. Note some of the display cases in the left foreground. These were made in Bethel, and are the same ones displaying artifacts in today's park museum.





## The Pavilion-Visitor Center

The walls and gables were erected on the pavilion. Re-construction of the building is literally like putting a jigsaw puzzle back together. All pieces were marked and stored for reassembly. Many new pieces had to be replicated exactly like the original so they would fit together.

The crew is currently erecting the interior beams and supporting structure so the roof can then be started. Getting under-roof is a main objective right now so the craftsmen can work under cover through the winter.

The interior of the new structure will look just like the old building with the post and beams and old siding exposed.



November 2004. Finding the right sections to go back into reconstruction.



November 2004. Erecting the beams and supports in preparation of adding the second floor and the roof.

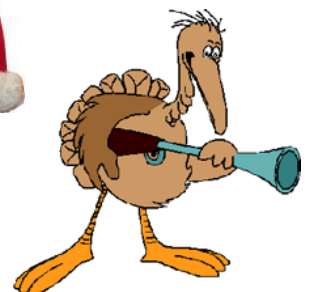


November 2004. The pavilion, like the mythical phoenix, is coming back to life.

**Next Meeting**

**(No December Meeting)**

The next FAN's Meeting will be on Monday Evening **January 10th** at the Redding Town Hall. The meeting will start at **7:00pm**. Please come and join with us in the planning of events and projects at Putnam Park.



**Happy Thanksgiving**

